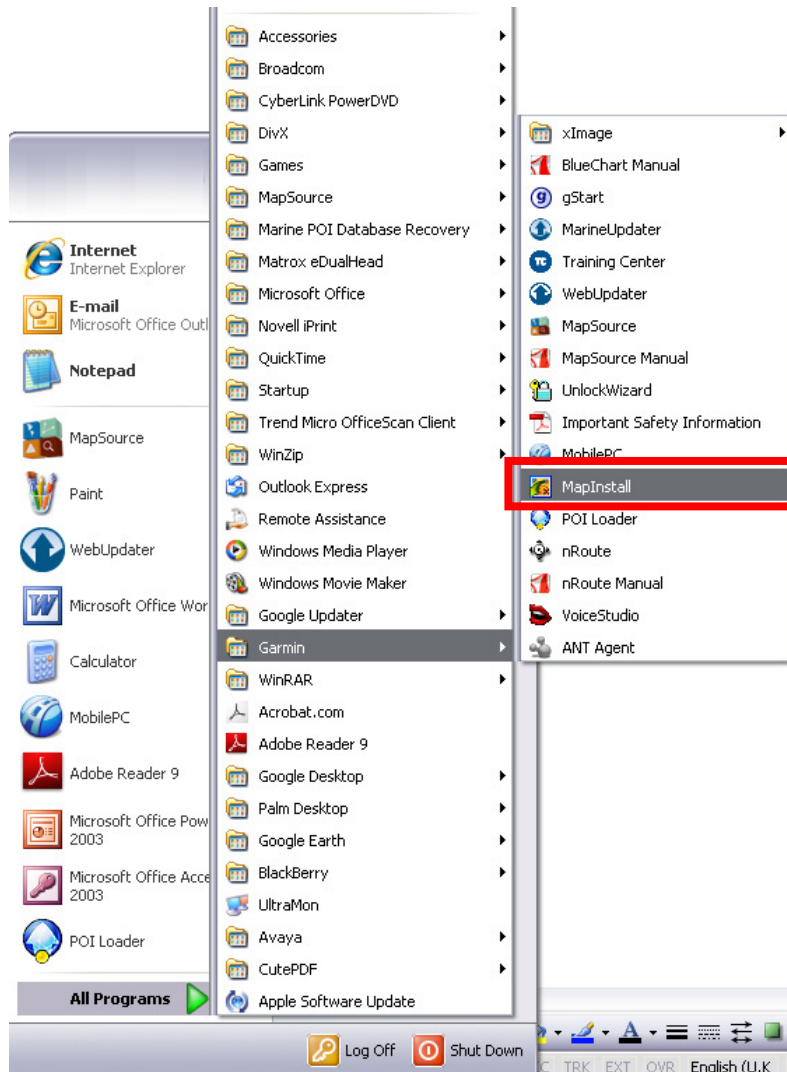


Sending Additional Mapping To A SD Card

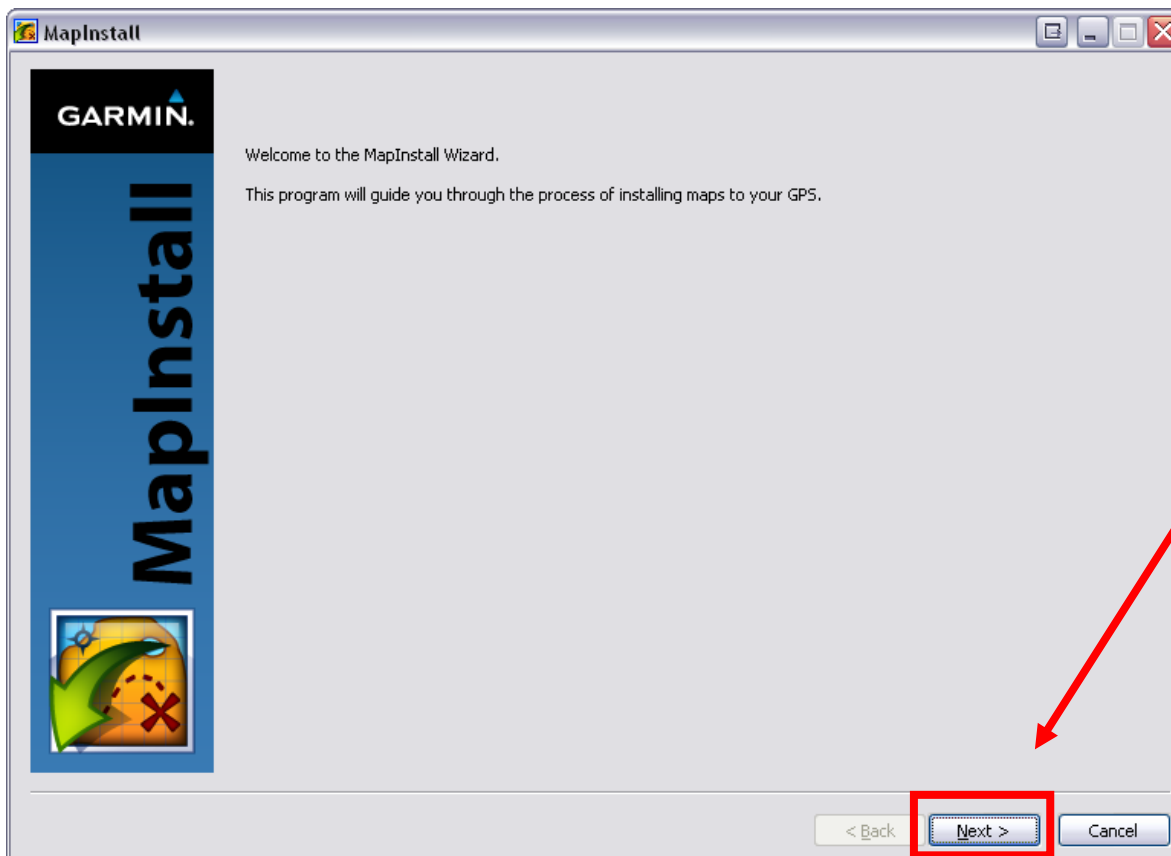
Please make sure your Garmin device is connected to the computer via a USB cable and Insert your blank SD card in to the Garmin Device before following the rest of this walkthrough. If you would like to load the whole of Europe to your device you will need a 2GB blank micro/SD card depending on your units card reader

Sending Additional Mapping To A SD Card



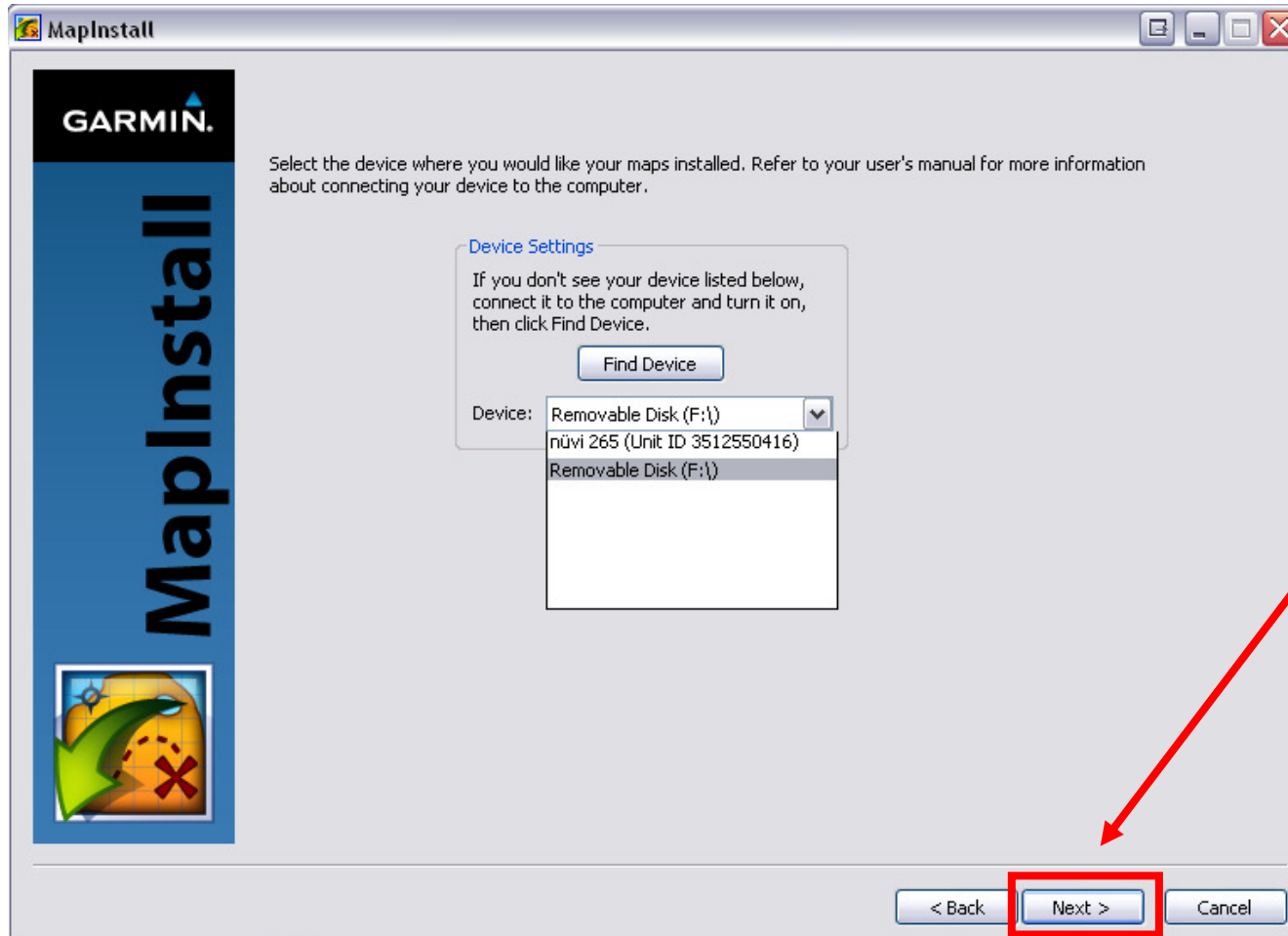
Click on **Start, All Programs, Garmin Folder,** then open **MapInstall**

Sending Additional Mapping To A SD Card



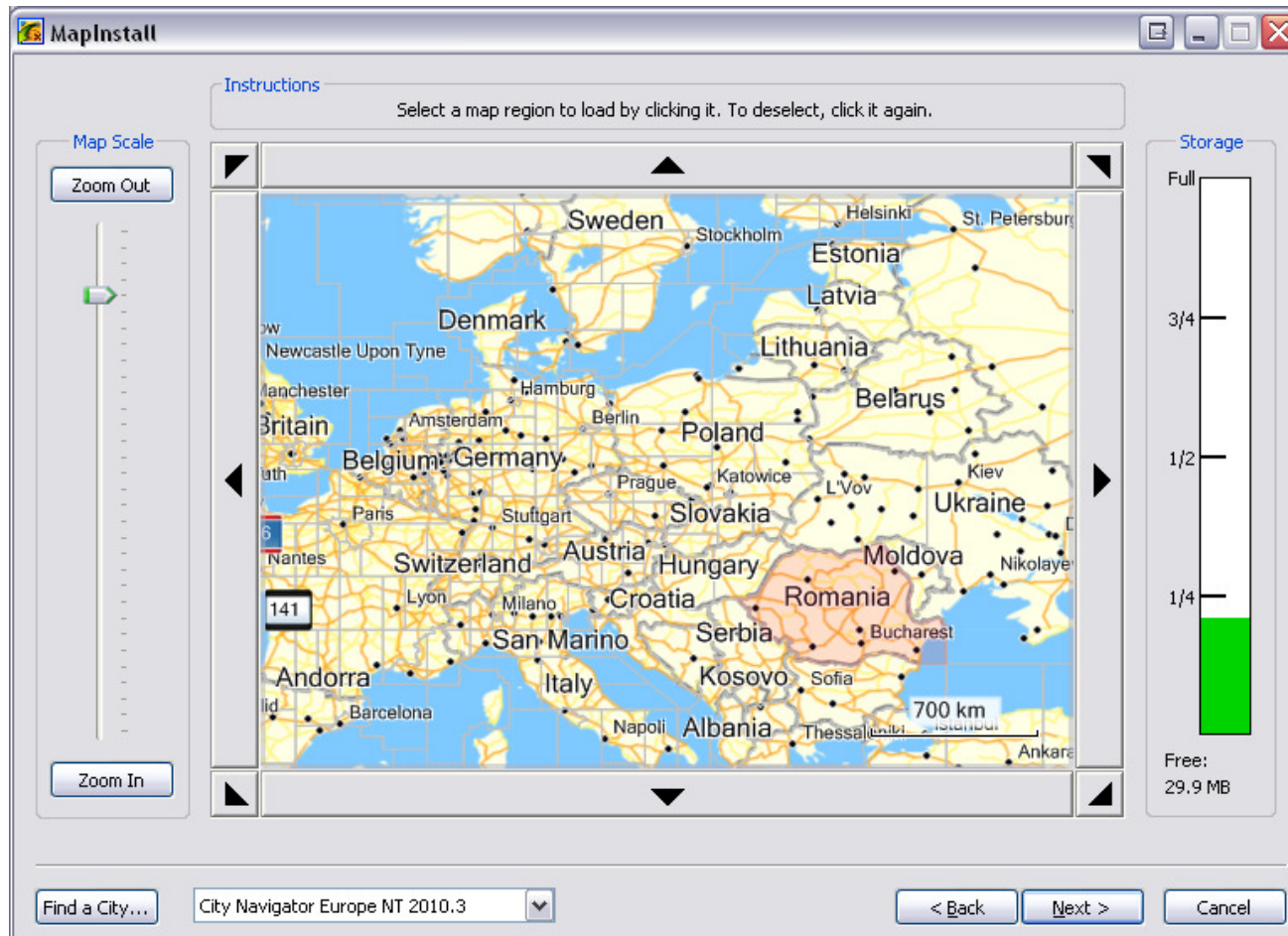
Click on **Next**

Sending Additional Mapping To A SD Card



From the Drop Down Box select the **Removable Disk Drive** this is your SD card then click on **Next**.

Sending Additional Mapping To A SD Card

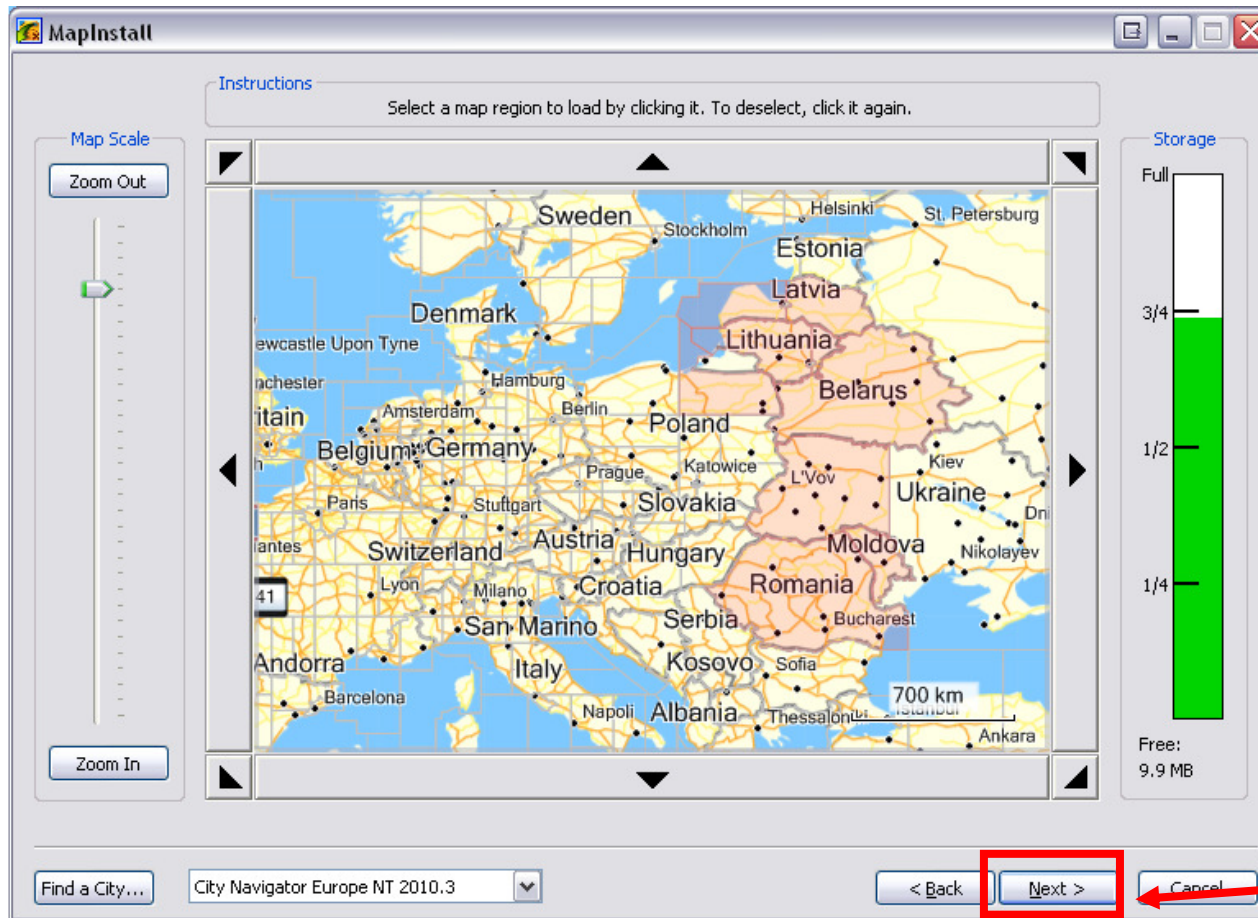


You will see a Map page you can select the mapping that you want to send to the SD card. To do this simply move your mouse over the region and click on it, the region will then turn pink.

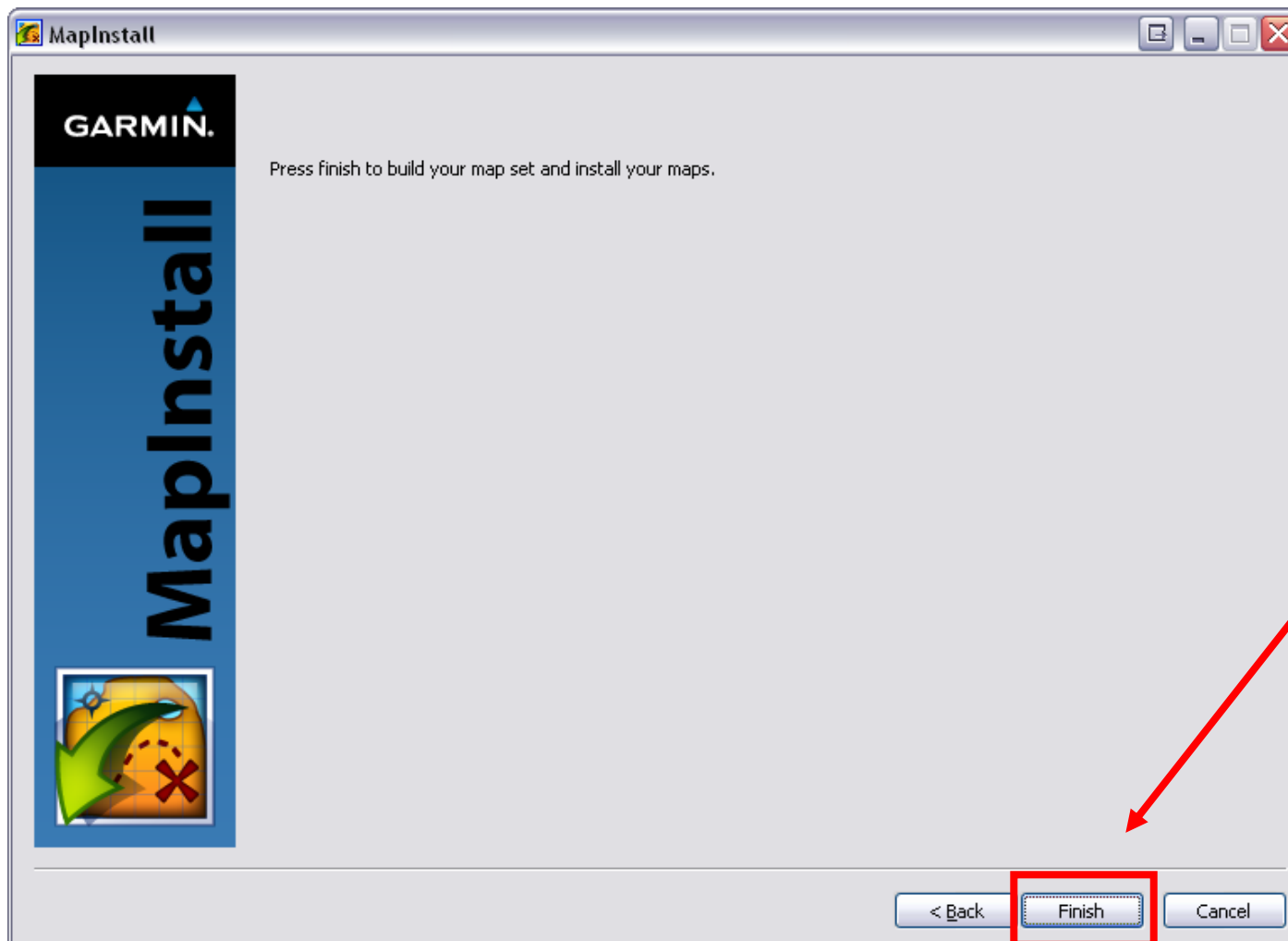
Sending Additional Mapping To A SD Card

You can select multiple regions by simply clicking on them, or alternatively click and hold your mouse and drag over multiple regions. You will notice a bar on the right hand side of the program this is how much space you have left on your memory card this needs to remain **Green**.

If you need to deselect some mapping simply click on the region again and it will change from pink back to white. Once you have selected all of the mapping you require click on **Next**

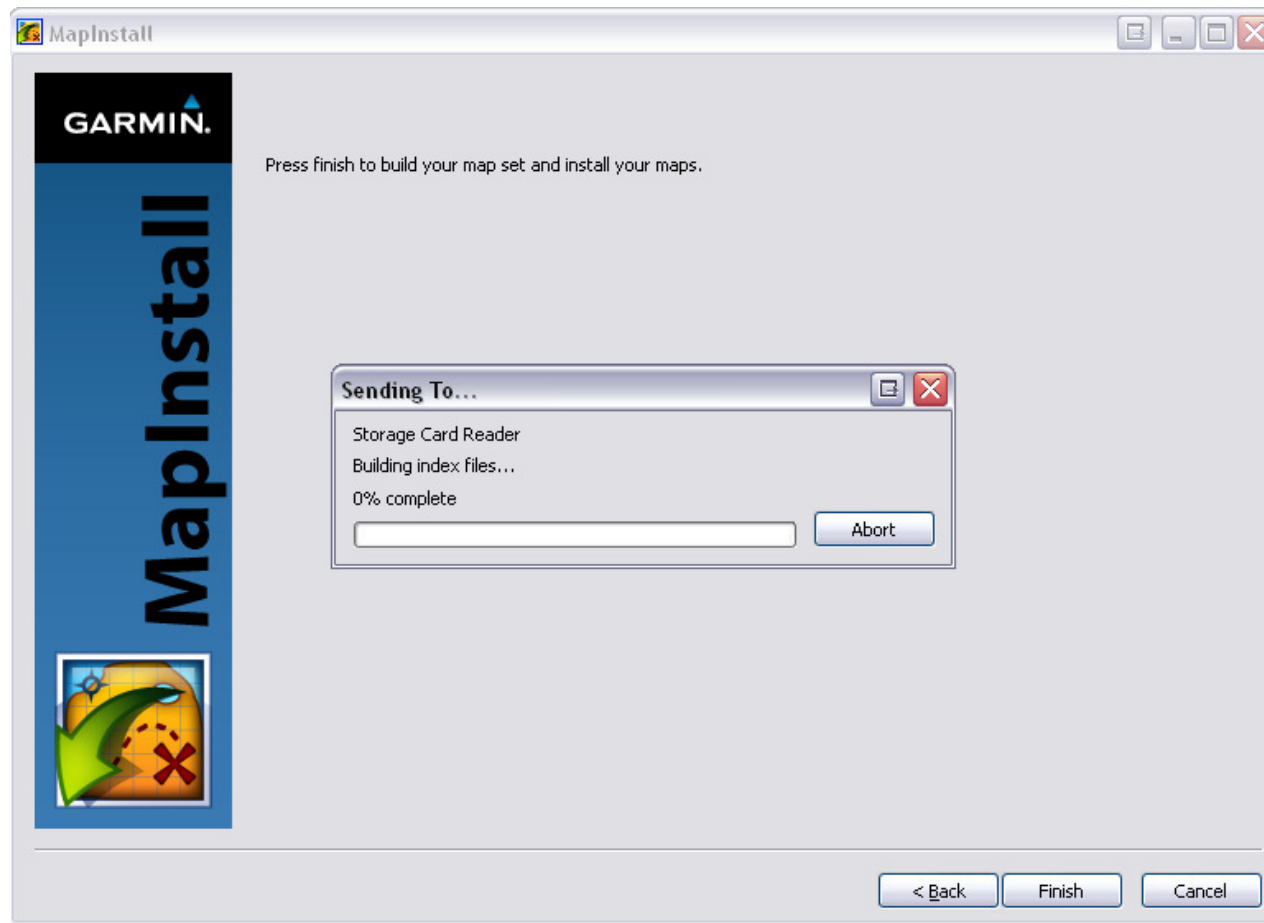


Sending Additional Mapping To A SD Card



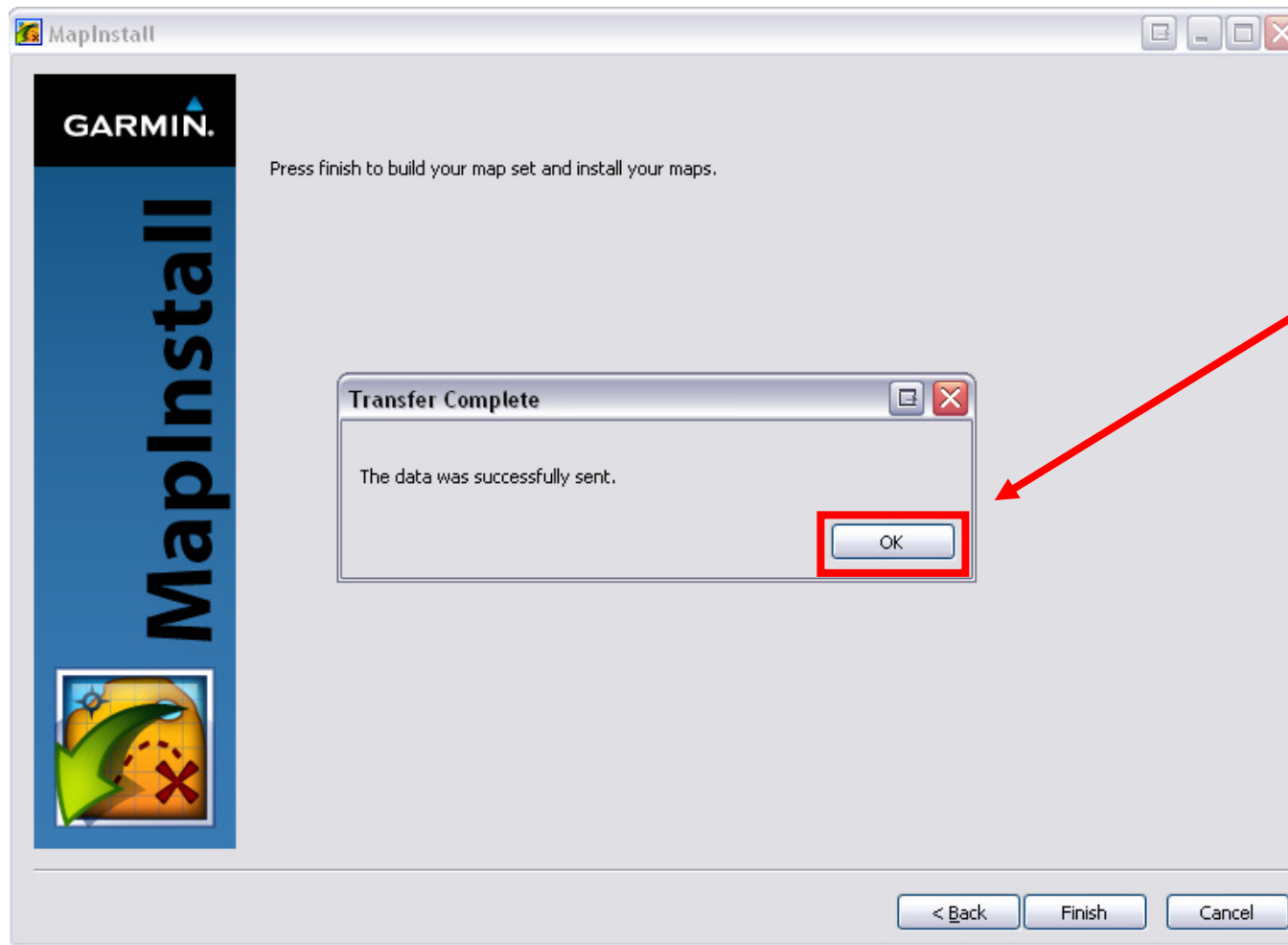
Click on
Finish

Sending Additional Mapping To A SD Card



The MapInstall program will begin to build the files for the SD card then send then across

Sending Additional Mapping To A SD Card



The maps have now been sent across to your SD card click **OK**